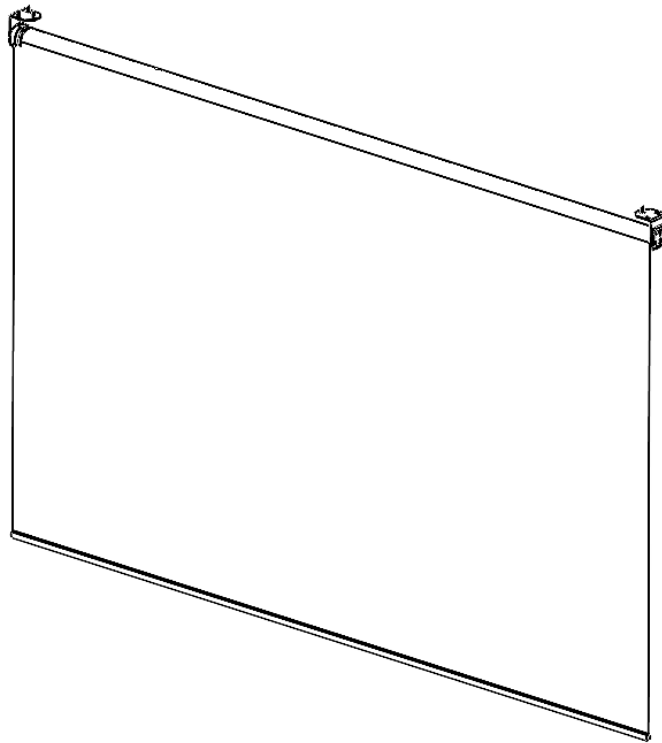


# MAKEFAST GROUP

## Manual and Motorised Roller Blind Owners Manual



---

### **Legal note:**

Installation and repair of MAKEFAST Ltd sunroofs and canopies must only be undertaken by MAKEFAST authorised engineers, using approved technical information, tools, and spares. MAKEFAST installations and service instructions must always be referenced during repairs and maintenance. MAKEFAST does not accept any liabilities for defect or damages caused by maintenance or repair by un-authorised parties.

VERSION 00

**CONTENTS**

SAFETY .....	2
ICONS.....	3
MANUAL AND MOTORISED ROLLER BLIND OVERVIEW .....	4
TOOLS REQUIREMENTS FOR TYPICAL INSTALLATION .....	5
UNPACKING THE BOX .....	6
WHAT'S INSIDE (TYPICAL) .....	6
POSITIONING THE MOUNTS .....	7
INSTALLING THE GUIDE TRACKS (IF REQUIRED) .....	8
INSTALLING THE ROLLER(S) .....	9
INSTALLING THE ROLLERS (Continued).....	10
CHARGING THE ROLLER BLIND (MANUAL SYSTEMS ONLY).....	11
REMOVING THE ROLLER BLIND / ADDING CHARGE (MANUAL SYSTEMS ONLY).....	12
ADDING ADDITIONAL CHARGE TO THE ROLLER BLIND (MANUAL SYSTEMS ONLY)....	12
TROUBLESHOOTING (MOTORISED SYSTEMS ONLY) .....	13
CONNECTING THE MOTOR ROLLERS (MOTORISED SYSTEMS ONLY) .....	14
MAINTENANCE .....	15
WARRANTY.....	16
SERVICE CONTACT .....	17

**Legal note:**

Installation and repair of MAKEFAST Ltd sunroofs and canopies must only be undertaken by MAKEFAST authorised engineers, using approved technical information, tools, and spares. MAKEFAST installations and service instructions must always be referenced during repairs and maintenance. MAKEFAST does not accept any liabilities for defect or damages caused by maintenance or repair by un-authorized parties.

**SAFETY**



DO NOT USE THE EQUIPMENT ABOVE +50°C (+122°F)



DO NOT USE THE EQUIPMENT BELOW -15°C (+5°F)



RISK OF ELECTRIC SHOCK



SOME PARTS CAN BE RECYCLED



INSTALLATION/USER MANUAL, READ BEFORE OPERATING THE EQUIPMENT



SPECIAL WARNING, READ CAREFULLY

**Legal note:**

Installation and repair of MAKEFAST Ltd sunroofs and canopies must only be undertaken by MAKEFAST authorised engineers, using approved technical information, tools, and spares. MAKEFAST installations and service instructions must always be referenced during repairs and maintenance. MAKEFAST does not accept any liabilities for defect or damages caused by maintenance or repair by un-authorized parties.

**ICONS**

VISUAL INSPECTION REQUIRED



DRILLING REQUIRED



SCREWDRIVER REQUIRED



SILICONE SEALANT REQUIRED



ALLAN KEY REQUIRED



MEASUREMENT REQUIRED



MARK WITH PENCIL

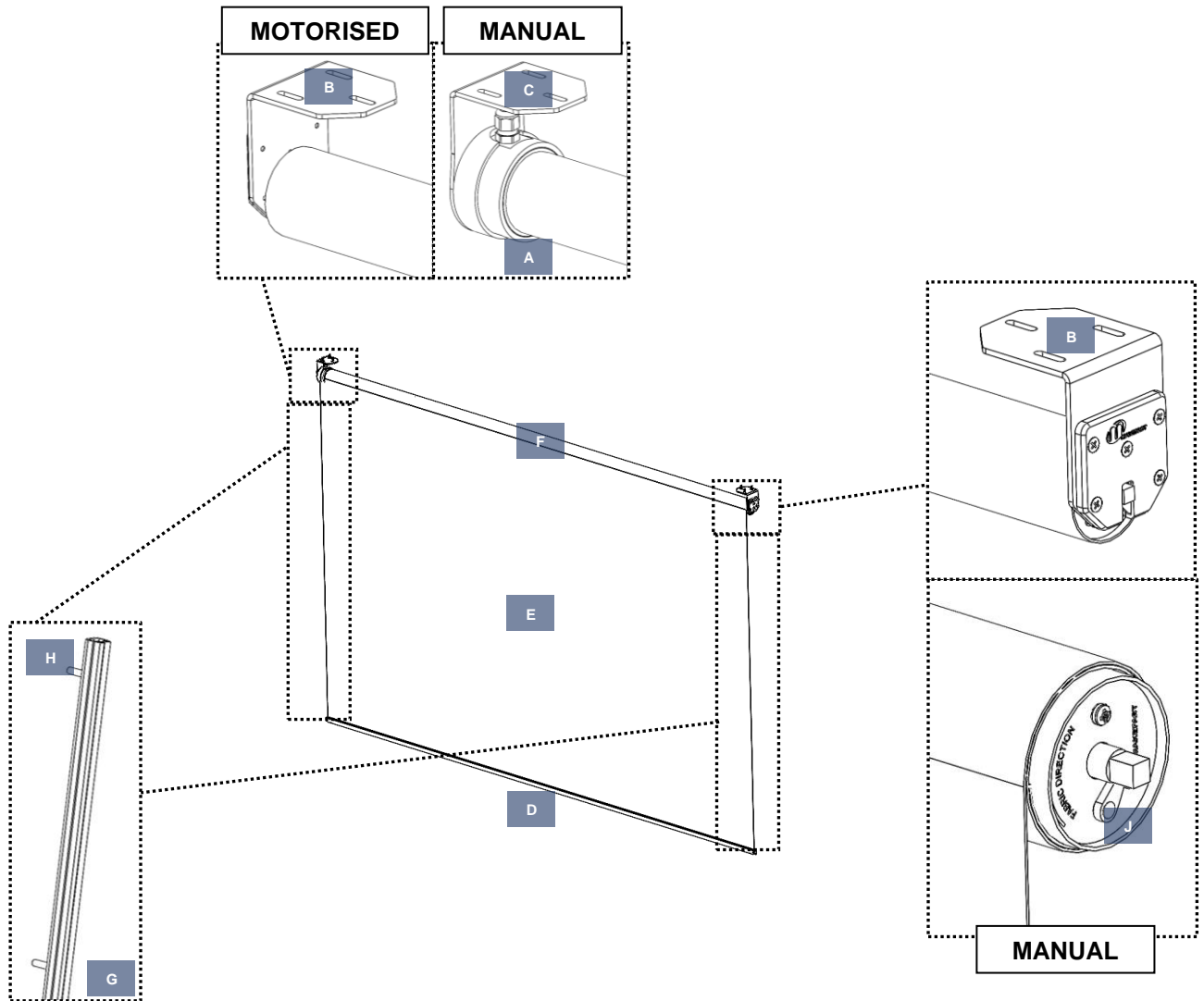


TAP THREAD

**Legal note:**

Installation and repair of MAKEFAST Ltd sunroofs and canopies must only be undertaken by MAKEFAST authorised engineers, using approved technical information, tools, and spares. MAKEFAST installations and service instructions must always be referenced during repairs and maintenance. MAKEFAST does not accept any liabilities for defect or damages caused by maintenance or repair by un-authorised parties.

**MANUAL AND MOTORISED ROLLER BLIND OVERVIEW**



- A** Motor Unit
- B** Manual End Bracket Assy
- C** Motorised End Bracket Assy
- D** Weight Tube Assembly
- E** Canvas
- F** Roller Assembly
- G** Guide Track (If included)
- H** Cut Down Rivet
- J** Charge Lock Pawl (Manual Only)

**Legal note:**

Installation and repair of MAKEFAST Ltd sunroofs and canopies must only be undertaken by MAKEFAST authorised engineers, using approved technical information, tools, and spares. MAKEFAST installations and service instructions must always be referenced during repairs and maintenance. MAKEFAST does not accept any liabilities for defect or damages caused by maintenance or repair by un-authorised parties.

## **TOOLS REQUIREMENTS FOR TYPICAL INSTALLATION**



### **ELECTRIC DRILL**

**DRILL BITS Ø:** 8.5, 10.3MM

**SCREWDRIVER:** POZI DRIVE

**ALLEN KEY:** 4MM

**SPANNERS:** 8MM, 10MM, ADJUSTABLE

**TAPE-MEASURE**

**SILICON SEALANT**

**PENCIL**

---

### **Legal note:**

Installation and repair of MAKEFAST Ltd sunroofs and canopies must only be undertaken by MAKEFAST authorised engineers, using approved technical information, tools, and spares. MAKEFAST installations and service instructions must always be referenced during repairs and maintenance. MAKEFAST does not accept any liabilities for defect or damages caused by maintenance or repair by un-authorised parties.

## UNPACKING THE BOX

Remove the Roller Blind from the box, taking care not to damage surfaces or material.

## WHAT'S INSIDE (TYPICAL)

- 1 x Roller (Note: these are not handed and can be installed in either orientation)
- 1 x Port guide track (Not applicable for all configurations)
- 1 x Starboard guide track (Not applicable for all configurations)
- Canvas (Note: the orientation of this is handed for manual rollers)
- 2 x End Brackets
- Fastener Pack
- Owners Manual

---

### Legal note:

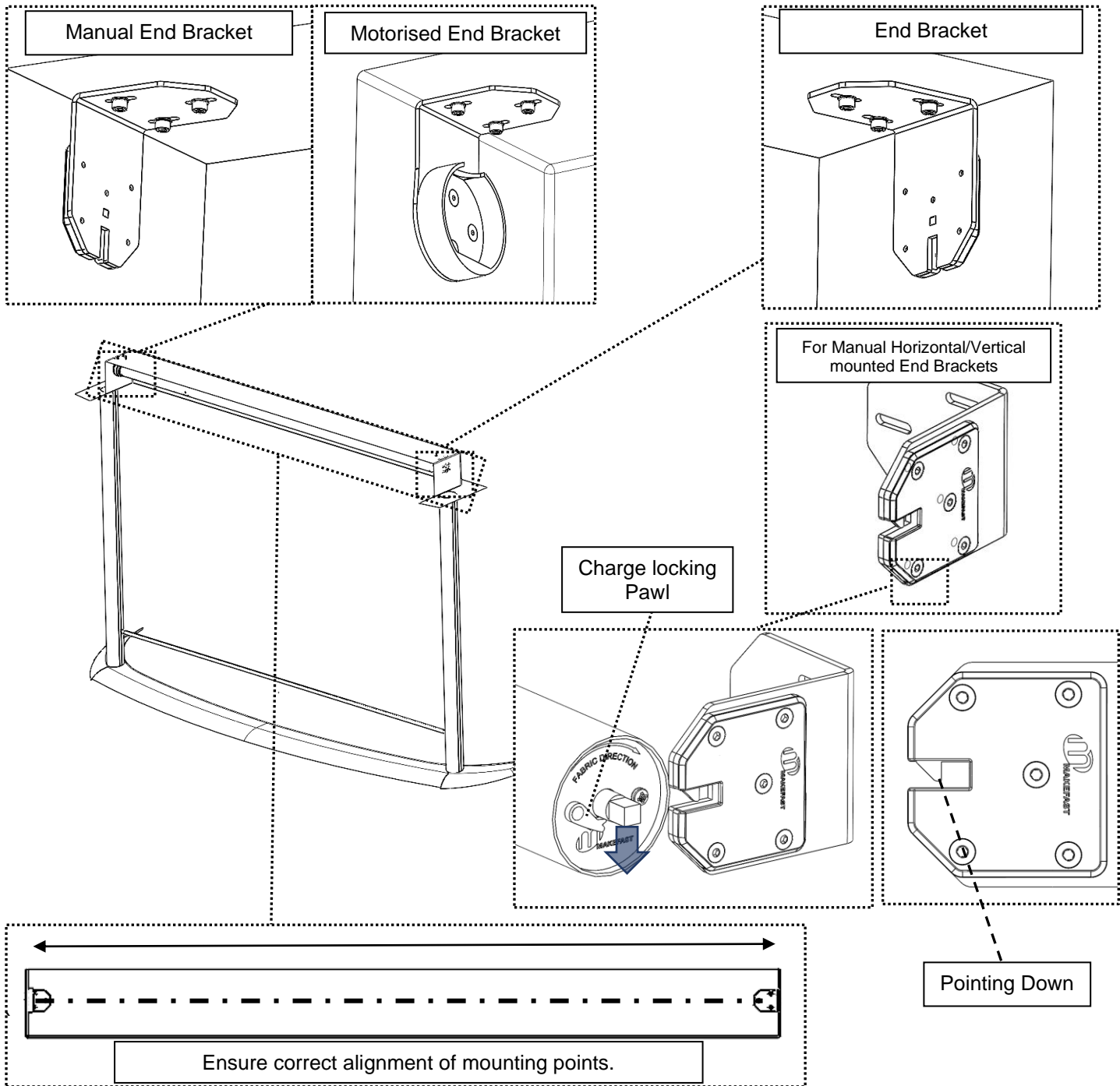
Installation and repair of MAKEFAST Ltd sunroofs and canopies must only be undertaken by MAKEFAST authorised engineers, using approved technical information, tools, and spares. MAKEFAST installations and service instructions must always be referenced during repairs and maintenance. MAKEFAST does not accept any liabilities for defect or damages caused by maintenance or repair by un-authorized parties.

**POSITIONING THE MOUNTS**

1. Fit the end brackets to be in-line with each other. (Drill and tap as required), ensure alignment with guide track (next step) before permanently fixing.

**TIP:** Use the Roller assemblies to set/check the spacing and alignment of mounting points

**IMPORTANT:** On manual systems where the brackets are mounted horizontally, the locking latch and charge lock pawl should be pointing down.



**Legal note:**

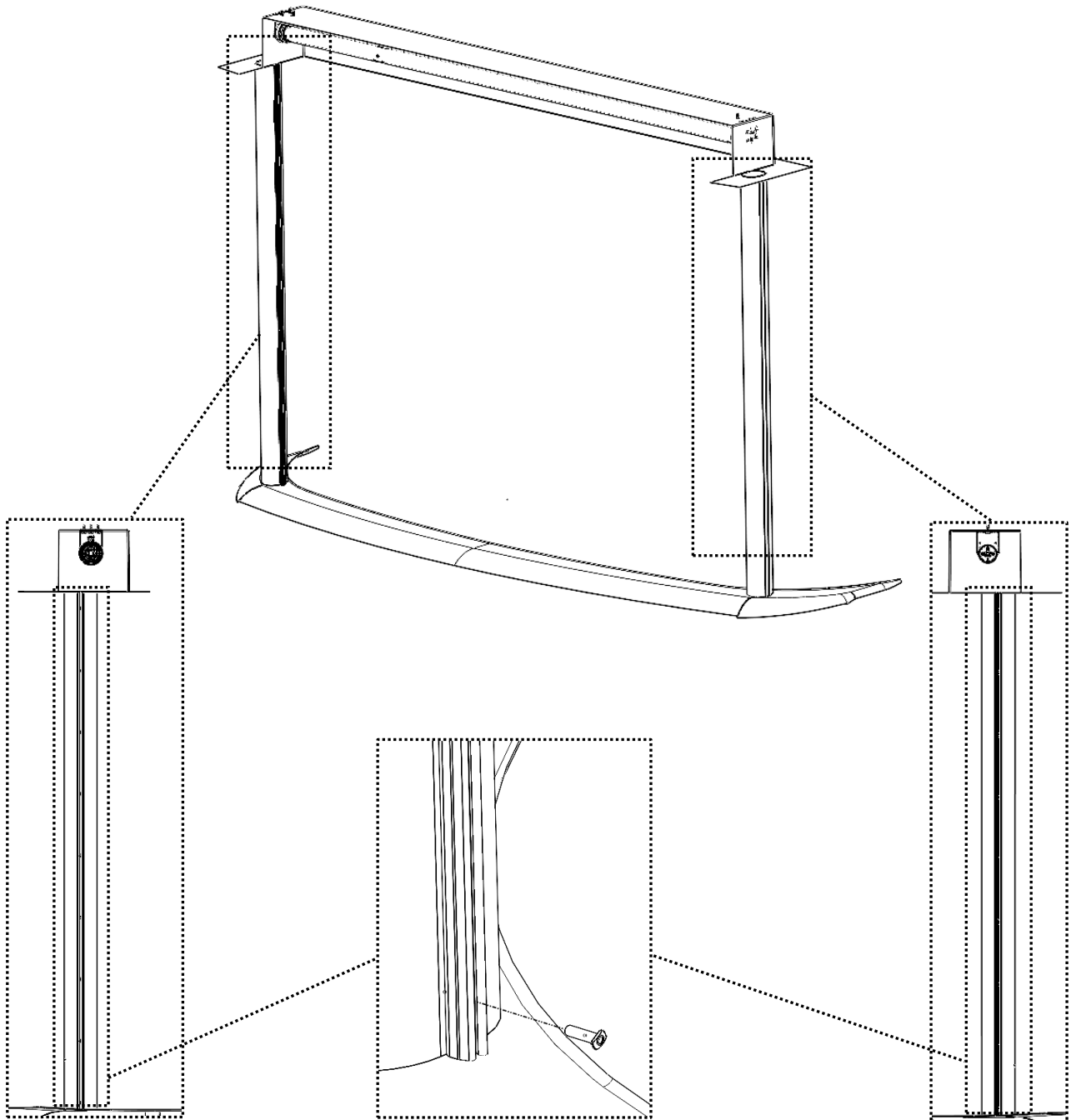
Installation and repair of MAKEFAST Ltd sunroofs and canopies must only be undertaken by MAKEFAST authorised engineers, using approved technical information, tools, and spares. MAKEFAST installations and service instructions must always be referenced during repairs and maintenance. MAKEFAST does not accept any liabilities for defect or damages caused by maintenance or repair by un-authorised parties.



## INSTALLING THE GUIDE TRACKS (IF REQUIRED)

1. Align the guide track by positioning it to be in-line with the required canvas run direction.
2. While holding the track in place, mark the track hole positions.
3. Drill 4.2mm holes and fix track using cutdown rivets provided.

**IMPORTANT:** Ensure alignment of port and starboard tracks to ensure smooth movement of Canvas.

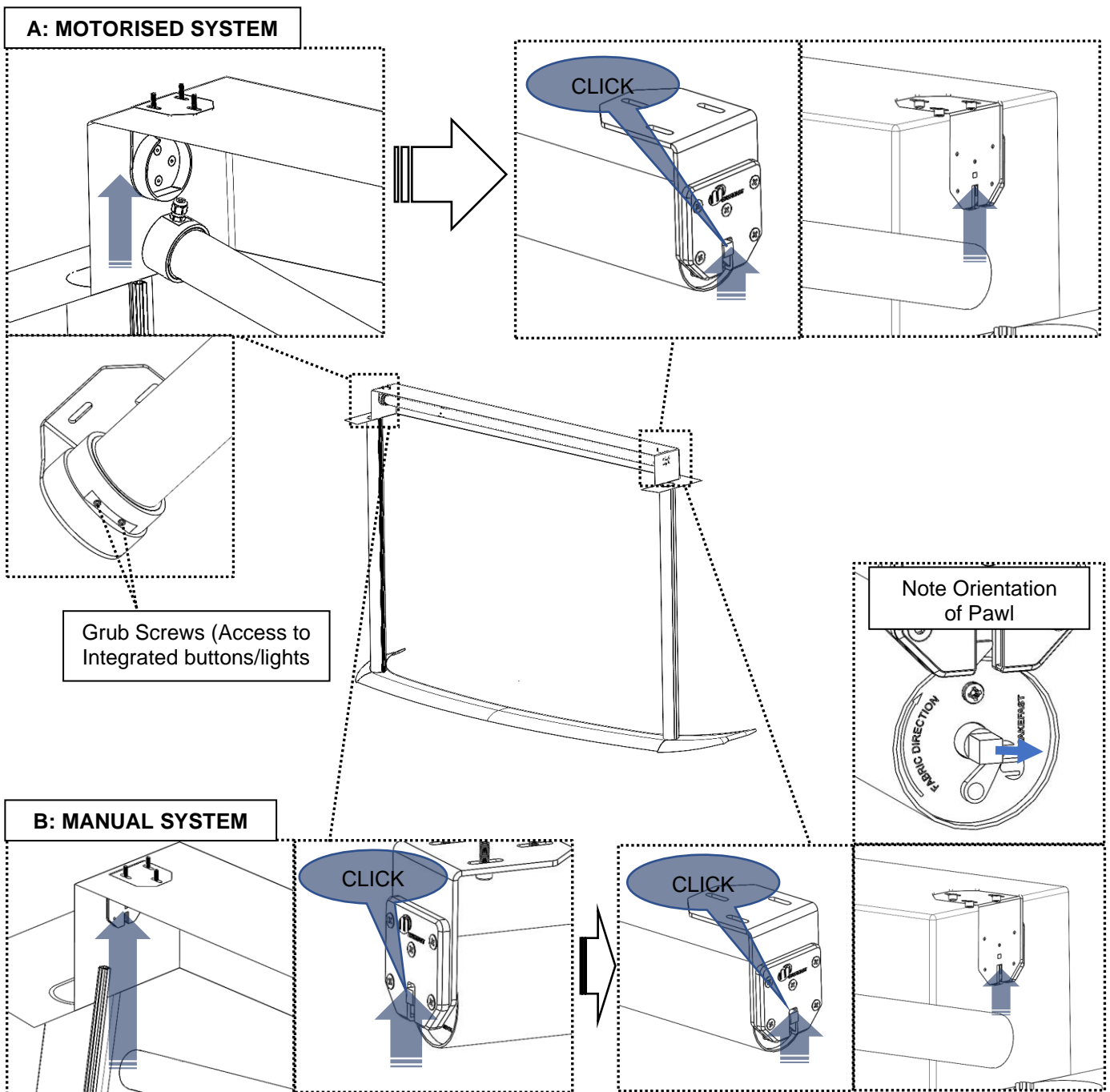


### Legal note:

Installation and repair of MAKEFAST Ltd sunroofs and canopies must only be undertaken by MAKEFAST authorised engineers, using approved technical information, tools, and spares. MAKEFAST installations and service instructions must always be referenced during repairs and maintenance. MAKEFAST does not accept any liabilities for defect or damages caused by maintenance or repair by un-authorised parties.

**INSTALLING THE ROLLER(S)**

1. **A: For Motorised systems:** Roller needs to be installed motor end first. Position the roller such that the large flat on the motor housing is resting on the mating flat of the mount bracket.  
**IMPORTANT:** Ensure grub screws on motorised end bracket are accessible once assembled, this is how the motor unit integrated buttons are accessed.
2. **B: Manual Systems:** Raise the end of the roller so that it sits horizontally and push the roller into the bracket cavity. Note that this is a tight fit, some lubrication may be necessary.
3. Raise the other end of the roller so that it sits horizontally and push the roller into the bracket cavity. Note that this is a tight fit, some lubrication may be necessary.  
**IMPORTANT:** Ensure that on manual systems the roller is correctly charged before installation (see 'Charging the system')

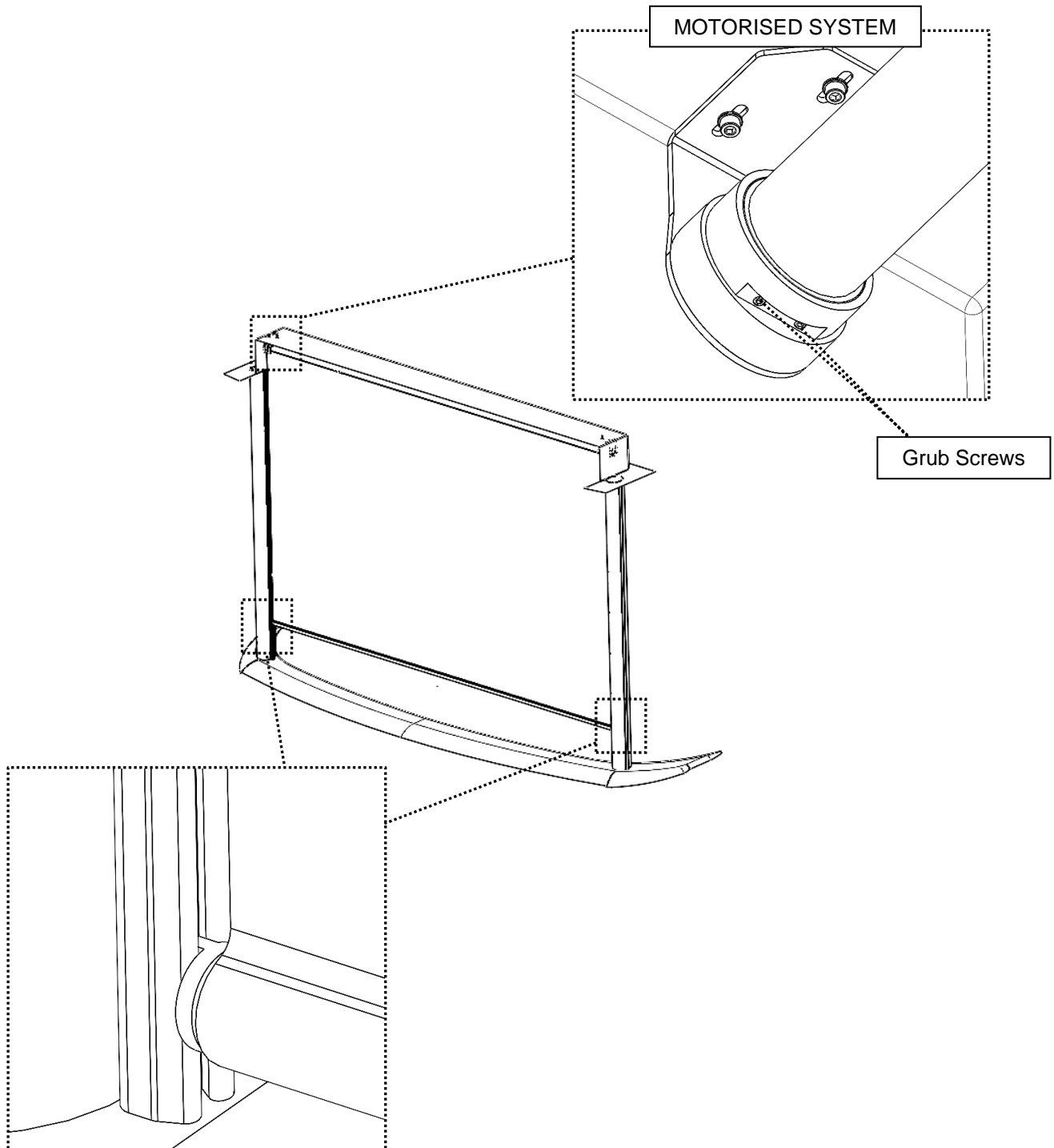


**Legal note:**

Installation and repair of MAKEFAST Ltd sunroofs and canopies must only be undertaken by MAKEFAST authorised engineers, using approved technical information, tools, and spares. MAKEFAST installations and service instructions must always be referenced during repairs and maintenance. MAKEFAST does not accept any liabilities for defect or damages caused by maintenance or repair by un-authorised parties.

## INSTALLING THE ROLLERS (Continued)

4. **For Motorised Systems:** When this is fully installed, the other end of the roller will click into place in the end bracket. The two grub screws will remain visible/accessible in the bracket. *These are to provide access to the in-built buttons on the motor if necessary (explained later)*
5. After installing the rollers, ensure that the canvases are attached using the Velcro strips. Take care that the canvases are centred well, and laid flat without creases
6. Insert the Weight Tube Assemblies into the Tracks



### Legal note:

Installation and repair of MAKEFAST Ltd sunroofs and canopies must only be undertaken by MAKEFAST authorised engineers, using approved technical information, tools, and spares. MAKEFAST installations and service instructions must always be referenced during repairs and maintenance. MAKEFAST does not accept any liabilities for defect or damages caused by maintenance or repair by un-authorised parties.

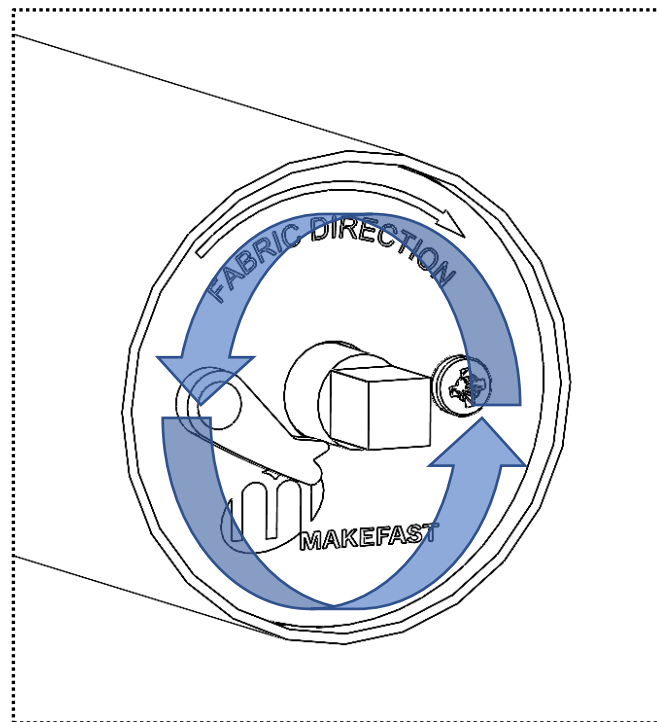
## CHARGING THE ROLLER BLIND (MANUAL SYSTEMS ONLY)



**IMPORTANT:** When charging the roller blind a spring is being charged rotationally; therefore if a tool slips when applying charge or releasing the charge pawl. The centre pin will spin with considerable force. Potentially spinning the tool around or throwing it off the roller. It is advised to wear gloves and eye protection during the charging procedure.

**Tip:** The easiest way to charge the roller blind is to add a “pre-charge” and lock the charge using the “charge lock pawl”.

1. To pre-charge, hold the roller stationary.
2. Using an 8mm spanner, rotate in pin in the opposite direction to the fabric direction marking.
3. Count the revolutions. (see the “pre-charging” document supplied with the roller for a guide number)
4. Once the desired number has been reached, the charge can be held by rotating the “charge lock pawl” into the hole located on the pin



### Legal note:

Installation and repair of MAKEFAST Ltd sunroofs and canopies must only be undertaken by MAKEFAST authorised engineers, using approved technical information, tools, and spares. MAKEFAST installations and service instructions must always be referenced during repairs and maintenance. MAKEFAST does not accept any liabilities for defect or damages caused by maintenance or repair by un-authorised parties.

## **REMOVING THE ROLLER BLIND / ADDING CHARGE (MANUAL SYSTEMS ONLY)**

To remove the roller blind, pull on the fabric to rotate the roller until the charge lock pawl can be relocated into the hole in the pin. The pawl can be pushed up using a thin object / screwdriver.

Once the pawl has been engaged into the hole, release the fabric and the charge lock pawl should now hold the charge.

Now the roller is safe to remove.

Using a flat head screwdriver (or similar) lift the latch on the bracket and pull the roller out.

Again, it is advised to have another person at the opposite end, so the roller doesn't drop.

## **ADDING ADDITIONAL CHARGE TO THE ROLLER BLIND (MANUAL SYSTEMS ONLY)**

As per the "CHARGING THE ROLLER BLIND" section, the same principles apply only this time the roller has already got charge so ensure the roller is firmly gripped before releasing the charge lock pawl.

Place the spanner / charging tool on the flats of the pin and rotate in the charge direction (NOTE: at this point the charge lock pawl is now disengaged)

Add the required additional turns onto the roller blind and reengage the locking pawl.

Reinstall the roller blind and test again.

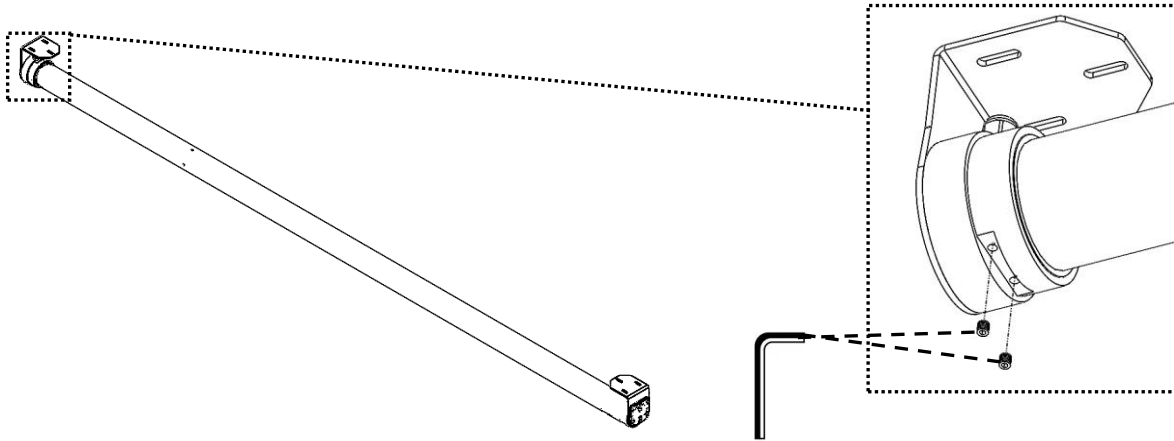
---

### **Legal note:**

Installation and repair of MAKEFAST Ltd sunroofs and canopies must only be undertaken by MAKEFAST authorised engineers, using approved technical information, tools, and spares. MAKEFAST installations and service instructions must always be referenced during repairs and maintenance. MAKEFAST does not accept any liabilities for defect or damages caused by maintenance or repair by un-authorised parties.

**TROUBLESHOOTING (MOTORISED SYSTEMS ONLY)**

1. Remove grub screws on Motorised end bracket assembly to view/access integrated button/lights.



Malfunctions are signalled by flashing of the red LED on the motor head  
 Some appear only when a motion command is sent (2,4,5), others also in stand-by (1,3).  
 The Red LED is lit steadily and flashes every 5 seconds.  
 The number of Flashes indicates the Error in progress.

RED LIGHT	DESCRIPTION	SOLUTION
1 FLASH	Motor in STOP. Dry contact input STOP remaining active (pressed), or Dry contact inputs OPEN and CLOSE remain active, i.e. pressed and held down simultaneously. (The motor interprets the simultaneous pressing of OPEN and CLOSE as a STOP command)	Check the Dry contact connections. (Dry contact Stop = Green + Brown)
2 FLASHES	Motor encoder error. The motherboard does not detect the rotation of the motor. Cause: Rotor blocked	Check the shutter is not blocked.
3 FLASHES	Motor in Thermal protection mode	Let the motor rest for about 10 minutes.
4 FLASHES	Supply voltage too low. Limit approx. 18V	Check the power supply voltage, especially during the upward movement.
5 FLASHES	Supply voltage too high. Limit approx. 28V	Check the power supply voltage.

**Legal note:**

Installation and repair of MAKEFAST Ltd sunroofs and canopies must only be undertaken by MAKEFAST authorised engineers, using approved technical information, tools, and spares. MAKEFAST installations and service instructions must always be referenced during repairs and maintenance. MAKEFAST does not accept any liabilities for defect or damages caused by maintenance or repair by un-authorized parties.

## CONNECTING THE MOTOR ROLLERS (MOTORISED SYSTEMS ONLY)

Each motor roller has a cable exiting the housing, through the cable gland. Each cable contains six wires:

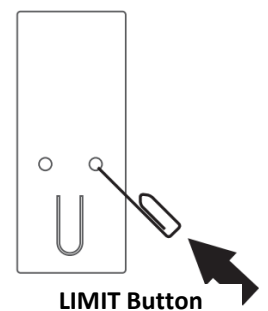
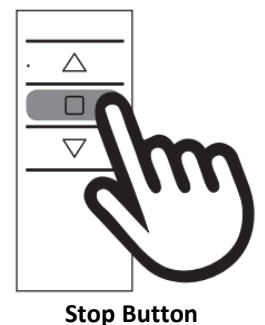
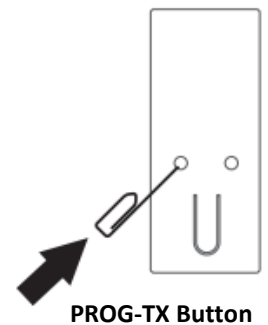
- Pink – GRD
- White – +24V
- Yellow – Com
- Green – Direction of rotation 1
- Brown – Direction of rotation 2
- Grey – Stop

The Pink and White wires are to be connected to the power supply (24V @ 2.5A); note that wiring the power the wrong way will prevent the system from working, ensure power terminals are wired correctly. The remaining wires can be connected to a 3-button switch (not supplied). This switch can be used by the operator to control the roller, but not for programming the system.

As delivered, the motors will not have correct start and end positions for its operation. This can be set up two ways, either with (1) the hand-held transmitter (supplied with first off delivery only, unless otherwise specified), or (2) the buttons on the motor (accessible through the grub screws mentioned previously). We recommend using the transmitter, as accessing the buttons can be awkward in some mounting locations.

### 1. Installing with the transmitter.

- a. First, the remote needs to be connected to the roller. To do this:
    - i. Press and hold the “PROG-TX” button on the back of the transmitter until the motor begins to move.
    - ii. Watch the direction of rotation on the roller and release the “PROG-TX” button.
    - iii. Within 5 seconds, press the corresponding button (Up or Down) on the remote.
    - iv. NB. If this is set incorrectly, press and hold the PROG-TX button until the motor begins to move, press the Stop button, the motor will make a brief jog, signalling that the direction has been reversed.
  - b. Setting up the top and bottom motion limits of the system; before starting, ensure the canvas is resting in an intermediate position between the desired top and bottom limit. *(NB. When in “programming mode” the functions are in “dead-man control”. As such the up / down buttons must be held down in order to move the motor.)*
    - i. Press and hold the “LIMIT” button on the back of the transmitter until the motor makes a brief jog.
    - ii. Press and hold the Up button until the system is in the desired top limit position. *(NB. The top limit must always be set first)*
    - iii. Press the Stop button, this will set the top limit. The motor will make a brief jog to confirm.
    - iv. Press and hold the Down button until the system is in the desired bottom limit position.
    - v. Again, press the Stop button to set the bottom limit. The motor will make a brief jog to confirm.
  - c. Setting the intermediate position of the blind.
    - i. Stop the blind in the desired intermediate location by pressing the Stop button during operation.
    - ii. Press and hold both the Up and Down buttons simultaneously, until the motor makes a brief jog in both directions. Confirming that the position has been set.
    - iii. In order to recall the intermediate position, press and hold the Stop button for at least 3 seconds. This will cause the motor to drive to the set location.
- IV. To erase the intermediate position, press and hold the Up and Down buttons simultaneously until the motor makes a brief jog in both directions.



### Legal note:

Installation and repair of MAKEFAST Ltd sunroofs and canopies must only be undertaken by MAKEFAST authorised engineers, using approved technical information, tools, and spares. MAKEFAST installations and service instructions must always be referenced during repairs and maintenance. MAKEFAST does not accept any liabilities for defect or damages caused by maintenance or repair by un-authorised parties.

## MAINTENANCE

### Mechanism

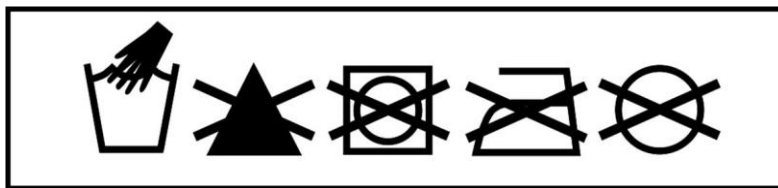
- Wipe down each track with fresh soapy water, remove any traces of dust or debris from the tracks.
- Remove any foreign objects from the track channels

### Canvas

Soiling can be rinsed off (not under high water pressure)

Clean the fabric on both sides and let it dry while the awning is in the deployed position

If necessary, sponge down with a soapy solution suitable for delicate fabrics at no more than 30°C (86F) avoiding heavy friction. Afterwards rinse copiously with clean water.



---

### Legal note:

Installation and repair of MAKEFAST Ltd sunroofs and canopies must only be undertaken by MAKEFAST authorised engineers, using approved technical information, tools, and spares. MAKEFAST installations and service instructions must always be referenced during repairs and maintenance. MAKEFAST does not accept any liabilities for defect or damages caused by maintenance or repair by un-authorised parties.



## WARRANTY

**Any product defect notification must be accompanied by a serial number, date of purchase, contact name, address and daytime telephone number. If this information is not provided, Makefast Ltd may be unable to process your warranty claim.**

1. Makefast Ltd (We, Our, Us) warrants this Product (excluding labour, travelling and expenses) to be in free of manufacturing defects during the period of warranty. The period of warranty is 24 months and commences on the date of despatch of the Product from Makefast Ltd. Extended Warranty is available beyond the manufacturers 2-year standard Warranty. Please contact Makefast or your Boat Broker for details.
2. The Warranty consists of (at Makefast's discretion) either repair or replacement spare parts only that will be provided on an exchange basis and will either be new, equivalent to new or re-conditioned. All replaced spare parts and Products shall become the property of Makefast, and are required to be returned to Makefast for analysis, and acceptance of warranty terms.
3. Unless agreed in writing, the Warranty will not apply: (a) because you have not used, stored or fitted the Product properly; or because you are in breach of the terms of this warranty or the Contract terms, or have not followed Our instructions in the product manual, or because of damage or defect due to wilful neglect or negligence by anyone ; (b) to loss of quality, degradation of performance or actual damage that results from the use of spare parts or other replaceable items that are neither made nor recommended by Makefast; (c) to a loss of quality, degradation of performance or damage that results from the installation of, damage to, or modification to the Product by someone else other than Our representatives or because of damage that results from changes required by you or a Third Party; (d) to damage that results from your connection of other fittings or accessories to the Product which We have not approved or your connection of other equipment or software not approved by Us; (e) because of external causes outside Our control which shall include accident, fire disaster or burglary; (f) because of faults caused by shock or fall, sand, dust, dirt, damp or corrosion, leaky batteries, repair by unauthorised personnel; (g) because of any malfunction or specific requirement of any other item of hardware, which you have linked to the Product in respect of items not included in the Contract.
4. As far as the law allows, we will not be responsible for the following: (a) loss of income, profits (actual or anticipated), and contracts or for any other business-related loss; (b) indirect or consequential loss or damage howsoever caused; (c) compensation for fitting of replacement parts.
5. These conditions shall in all respect be governed and construed in accordance with English Law and subject to the exclusive jurisdiction of the English Courts.

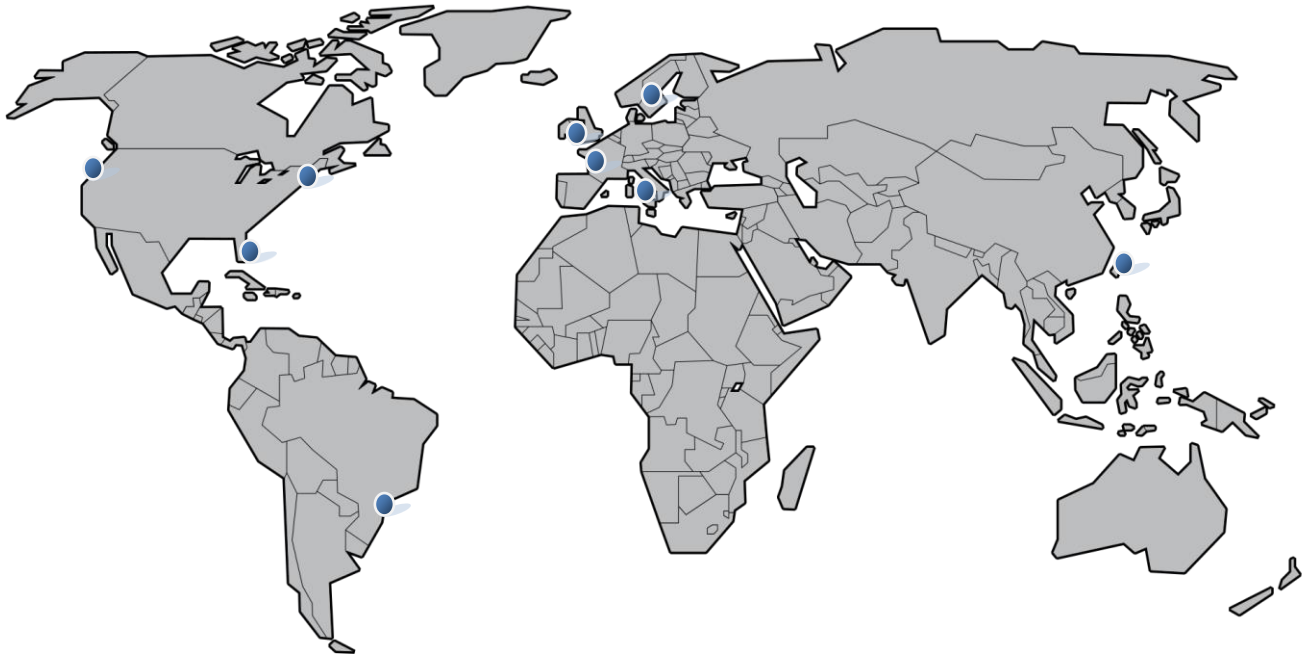
---

### Legal note:

Installation and repair of MAKEFAST Ltd sunroofs and canopies must only be undertaken by MAKEFAST authorised engineers, using approved technical information, tools, and spares. MAKEFAST installations and service instructions must always be referenced during repairs and maintenance. MAKEFAST does not accept any liabilities for defect or damages caused by maintenance or repair by un-authorized parties.

## SERVICE CONTACT

Please ring Makefast Ltd +44 1686 629010 for contact details in the highlighted areas:



---

### Legal note:

Installation and repair of MAKEFAST Ltd sunroofs and canopies must only be undertaken by MAKEFAST authorised engineers, using approved technical information, tools, and spares. MAKEFAST installations and service instructions must always be referenced during repairs and maintenance. MAKEFAST does not accept any liabilities for defect or damages caused by maintenance or repair by un-authorised parties.